



PRODUCT CATALOG

LED Commercial Lighting Fixtures

TABLE OF CONTENTS

LED INDOOR FIXTURES pg. 3-15

LED OUTDOOR FIXTURES pg. 16-20

LED LINEAR TUBES pg. 21-23

EarthTronics is an LED lighting product manufacturer and supplier dedicated to developing innovative energy-efficient lighting products that provide a positive economic and environmental impact for our customers. EarthTronics lighting products are focused on commercial and institutional customers for use in office, warehousing, retail, education, long term care, hospitality, and manufacturing.

Since 2007, we have been at the cutting edge of LED products. Our home resides in Norton Shores, MI, but we can be found anywhere you need a little light.

Where Efficiency Meets Innovation



Linear Highbay Premium

This fixture's lightweight and compact design is great for warehouse and manufacturing applications.



VOLTAGE

120/347V

WATTAGE

92W up to 270W

LUMENS

13800 up to 40500

COLORS

4000K, 5000K

FEATURES

- + Lightweight, compact design
- + 150 lumens per watt
- + Standard 6kV surge protection included (10kV available)
- + PMMA lens
- + Durable steel housing
- + Up to 50° C true ambient temperature
- + Driver standard with 0-10V dimming (prewired)
- + Suitable for damp locations
- + Dimmable
- + 100,000 hrs rated life L70
- + VHook + chain included
SJT Cord NOT included
- + EarthConnect available for 120V and 277V applications
- + EarthConnect not for use in 347V applications

COMPATIBLE

with EarthConnect®
Network Lighting Controls

120V and 277V ONLY



Order Code	Model #	Length	Watts	CCT	Lumens
11701	HBL9240WH5	1.3ft	92W	4000K	13800LM
11702	HBL9250WH5	1.3ft	92W	5000K	13800LM
11703	HBL13540WH5	1.3ft	135W	4000K	20250LM
11704	HBL13550WH5	1.3ft	135W	5000K	20250LM
11705	HBL18540WH5	1.9ft	185W	4000K	27750LM
11706	HBL18550WH5	1.9ft	185W	5000K	27750LM
11708	HBL27050WH5	2.6ft	270W	5000K	40500LM

Optional Accessories

Pendant Mount and Surface Mount Kits, Wire Guards, PIR Sensor, Advanced Controls, Emergency Back-Up Driver, and 6ft Cord are available.

For more information please refer to our specification sheets on www.EarthTronics.com

Linear Highbay - Color & Watt Selectable

This fixture's lightweight and compact design is great for warehouse and manufacturing applications.



3
Models

VOLTAGE
120/347V

WATTAGE
100W up to 270W

LUMENS
15000 up to 40500

COLORS
4000K, 5000K



FEATURES

- + 3-Stage brightness adjustable
- + 2 CCT color selectable
- + Lightweight, compact design
- + 6kV ANSI surge protection standard
- + PMMA lens
- + Durable steel housing
- + Up to 50° C true ambient temperature
- + Driver standard with 0-10V dimming (prewired)
- + Suitable for damp locations
- + 100,000 hrs rated life L70
- + Hanging hardware inclosed
- + 12VDC easy twist audio jack receptacle compatible with EarthConnect and other controls

COMPATIBLE
with EarthConnect®
Network Lighting Controls



Order Code	Model #	Length	Watts Selectable	CCT Selectable	Lumens
11858	HBLWS115CCTWH5	1.9ft	78W, 92W, or 115W	4000K 5000K	11700 13800 17250
11859	HBLWS185CCTWH5	1.9ft	135W, 155W, or 185W	4000K 5000K	20250 23250 27750
11860	HBLWS270CCTWH5	2.6FT	200W, 230W, or 270W	4000K 5000K	30000 34500 40500

Optional Accessories

Pendant Mount and Surface Mount Kits, Wire Guards, PIR Sensor, Emergency Back-Up Driver, 6ft Cord, Advanced Controls are available.

UFO Highbay - Color & Watt Selectable

The UFO's simple and efficient design is great for warehouse and manufacturing applications.



3
Models



VOLTAGE

120/347V

WATTAGE SELECTABLE

100W up to 300W

LUMENS

16000 up to 48000

COLOR SELECTABLE

4000K, 5000K

FEATURES

- + 3-Stage brightness adjustment
- + 2 CCT color selectable
- + Ship with standard 6' 18/3 SJT cord, 0-10V dimming wires and mounting hooks
- + Corrosion resistance die-cast aluminum alloy
- + IP65 wet location rated
- + ETL Sanitization listed to NSF Std. 2
- + Polycarbonate lens is IK08 rated
- + 100,000 hrs rated life L80
- + Standard 6kV surge protection included (10kV available)
- + Easy screw-in audio jack microwave sensor available
- + EarthConnect Advanced Lighting Control PIR sensor available

COMPATIBLE
with EarthConnect®
Network Lighting Controls



Order Code	Model #	Watts Selectable	Lumens	CCT Selectable
11787	HBU150WSCCTB5S	100W, 125W, or 150W	16000 20000 24000	4000K 5000K
11788	HBU240WSCCTB5S	150W, 200W, or 240W	24000 32000 38400	4000K 5000K
11902	HBU300WSCCTB5S	200W, 240W, or 300W	32000 38400 48000	4000K 5000K

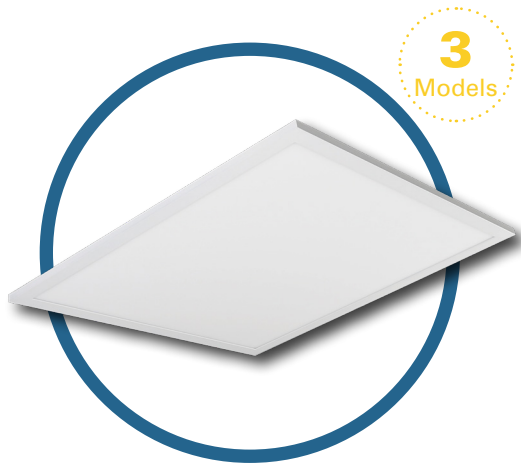
***Mounting Hooks Included**
6ft 18/3 SJT Whip Included

Optional Accessories

Reflectors, Trunnion Mounts, Wire Guards, Microwave Sensor, Advanced Controls and Emergency Back-up Driver are available.

Back-Light Panel

Color and Wattage Selectable.



3
Models.

VOLTAGE

120/347V

WATTAGE SELECTABLE

30W up to 50W

LUMENS

3750 up to 6250

COLOR SELECTABLE

3500K, 4000K, 5000K

FEATURES

- + 3-Stage brightness adjustments
- + 3 CCT color selectable
- + Direct illumination provides true color over the life of the product
- + Integral LED lens is constructed from PMMA and provides even illumination across the face of the panel
- + Steel housing interior is painted white for over 96% reflectivity
- + Contractor friendly junction box for easy installation
- + 0-10V dimming is standard
- + 50,000 hrs rated life
- + EarthConnect Advanced Lighting Controls are available

COMPATIBLE
with EarthConnect®
Network Lighting Controls



Order Code	Model #	Watts Selectable	Lumens	CCT Selectable
11674 1x4	LDFP1X4W5CCTD5	30W, 35W, or 40W	3750 4375 5000	3500K, 4000K, or 5000K
11673 2x2	LDFP2X2WSCCTD5	30W, 35W, or 40W	3750 4375 5000	3500K, 4000K, or 5000K
11675 2x4	LDFP2X4WSCCTD5	35W, 40W, or 50W	4375 5625 6250	3500K, 4000K, or 5000K

Optional Accessories

Emergency Back-up Driver, Surface Mount kits, Drywall kits, and Advanced Controls are available.

VaporTight

This vapor tight fixture is ideal for commercial and industrial environments where water, humidity and dust may occur. This fixture is corrosion resistant.



3

Models



VOLTAGE

120/347V

WATTAGE SELECTABLE

15W up to 90W

LUMENS

1950 up to 11700

COLOR SELECTABLE

3500K, 4000K, 5000K

FEATURES

- + 3-Stage brightness adjustable
- + 3 CCT color selectable
- + The lens and LED module board are integrated
- + Driver standard with 0-10V dimming (prewired)
- + Fixture is corrosion resistant
- + The polycarbonate housing and lens are sealed to and tested for IP65
- + Dimmable
- + 100,000 hours rated life L70
- + NEMA 4x
- + EarthConnect Advanced Lighting Controls are available

COMPATIBLE

with EarthConnect®
Network Lighting Controls



Order Code	Model #	Length	Watts Selectable	CCT Selectable	Lumens
11669	LVT2WSCCTD5	2ft	15W, 20W, or 25W	3500K, 4000K, or 5000K	1950LM 2600LM 3250LM
11631	LVT4WSCCTD5	4ft	34W, 38W, or 45W	3500K, 4000K, or 5000K	4420LM 4940LM 5850LM
11632	LVT8WSCCTD5	8ft	65W, 75W, or 90W	3500K, 4000K, or 5000K	8450LM 9750LM 11700LM

Optional Accessories

Emergency Back-up Driver, Microwave, Occupancy Sensor, Sensor Remote Control, Advanced Controls available.

Strip Light

This Strip Light is great for general lighting and manufacturing applications.



3

Models

VOLTAGE

120/347V

WATTAGE SELECTABLE

15W up to 90W

LUMENS

1950 up to 11700

COLOR SELECTABLE

3500K, 4000K, 5000K



FEATURES

- + 3-Stage brightness adjustable
- + 3 CCT color selectable
- + Driver standard with 0-10V dimming (prewired)
- + 12 VDC available for EarthConnect®
- + LED array is integrated in the lens assembly and snap locks to the frame for easy installation
- + UL 1598 damp and dry locations
- + 100,000 hours rated life L70
- + 4kV ANSI surge protection included
- + EarthConnect Advanced Lighting Controls are available

COMPATIBLE
with EarthConnect®
Network Lighting Controls



Order Code	Model #	Length	Watts Selectable	CCT Selectable	Lumens
11880	LST2WSCCTD5S	2ft	15W, 20W, or 25W	3500K, 4000K, or 5000K	1950LM 2600LM 3250LM
11629	LST4WSCCTD5	4ft	22W, 28W, or 40W	3500K, 4000K, or 5000K	2860LM 3640LM 5200LM
11630	LST8WSCCTD5S	8ft	65W, 75W, or 90W	3500K, 4000K, or 5000K	8450LM 9750LM 11700LM

Optional Accessories

Emergency back-up Driver, Microwave Occupancy Sensor, Wire Guards, Sensor Remote Control, Row + Corner Connectors, Advanced Controls are available.

Wrap Light

The Wrap Light fixture is the perfect solution for offices, stairways, bathrooms, and storage areas.



VOLTAGE

120/347V

WATTAGE SELECTABLE

32W, 40W, 48W

LUMENS

3680, 4600, 5520

COLOR SELECTABLE

3500K, 4000K, 5000K

FEATURES

- + 3-Stage brightness adjustable
- + 3 CCT color selectable
- + Driver standard with 0-10V dimming (prewired)
- + UL 1598 damp and dry locations
- + Dimming range 10% to 100%
- + Steel housing with a white finish

Order Code	Model #	Length	Watts Selectable	CCT Selectable	Lumens
11668	LW4WSCCTD5	4ft	32W, 40W, or 48W	3500K, 4000K, or 5000K	3680LM 4600LM 5520LM

LED Troffers - Color & Watt Selectable

LED Troffers are ideal for construction, renovation, and retrofit commercial applications.



3
Models

VOLTAGE

120/347V

WATTAGE SELECTABLE

20W up to 34W

LUMENS

2500 up to 4250

COLOR SELECTABLE

3500K, 4000K, 5000K



FEATURES

- + 3-Stage brightness adjustable
- + 3 CCT color selectable
- + 0-10V dimming
- + Dimming range of 10% to 100%
- + Basket lens is securely mounted
- + Easily installs in drop ceiling T-Bar grids
- + Earthquake clips are integral to the frame
- + Acrylic Lens
- + UL 1598 for dry and damp locations
- + EarthConnect Advanced Lighting Controls are available

COMPATIBLE

with EarthConnect®
Network Lighting Controls

120V and 277V ONLY



Order Code	Model #	Sizes	Watts Selectable	CCT Selectable	Lumens
11672	LTF1X4WSCCTD5	1x4	20W, 25W, or 30W	3500K, 4000K, or 5000K	2500LM 3125LM 3750LM
11670	LTF2X2WSCCTD5	2x2	20W, 25W, or 30W	3500K, 4000K, or 5000K	2500LM 3125LM 3750LM
11671	LTF2X4WSCCTD5	2x4	25W, 30W, or 34W	3500K, 4000K, or 5000K	3125LM 3750LM 4250LM

Optional Accessories

Microwave Sensor, Advanced Controls, Emergency Back-up Driver, and Recessed Drywall Kit are available

Square Canopy - Color & Watt Selectable

The Square Canopy is ideal for parking garages and warehouses.



2
Models



VOLTAGE

120/277V

WATTAGE SELECTABLE

30W up to 120W

LUMENS

3900 up to 15600

COLOR SELECTABLE

3000K, 4000K, 5000K

FEATURES

- + 3-Stage brightness adjustable
- + 3 CCT color selectable
- + 0-10V dimming
- + Dimming range of 10% to 100%
- + IP65 wet location rated, UL listed
- + Standard 4kV ANSI surge protection included (10kV available)
- + Various mounting capabilities
- + Polycarbonate Lens

Order Code	Model #	Watts Selectable	CCT Selectable	Lumens
11625	CA50WSCCTBK1	30W, 40W, or 50W	3000K, 4000K, or 5000K	3900LM 5200LM 6500LM
11626	CA120WSCCTBK1	72W, 96W, or 120W	3000K, 4000K, or 5000K	9300LM 12400LM 15600LM

Round Canopy

The Round Canopy is ideal for parking garages and warehouses.



2
Models

VOLTAGE

100/347V

WATTAGE

60W, 100W

LUMENS

8100, 13750

COLOR SELECTABLE

3000K, 4000K, 5000K



FEATURES

- + Easy installation
- + 3 CCT color selectable
- + Durable cast aluminum housing
- + Built to withstand all climates and allows for a wide temperature range
- + -40°F to 131°F operating range
- + Directly fits onto existing electrical boxes
- + IP65 approved for outdoor wet applications, UL Listed
- + Full function microwave sensor available
- + Various mounting capabilities

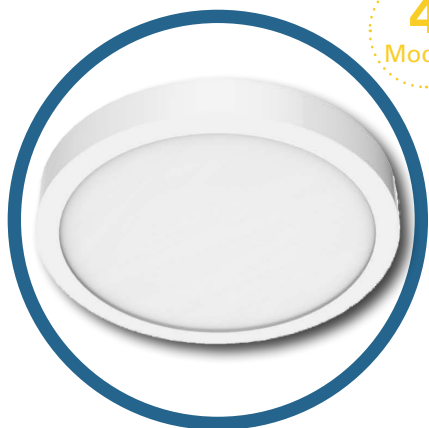
Order Code	Model #	Watts	CCT Selectable	Lumens
11552	CA60CCTBK5	60W	3000K, 4000K, or 5000K	8100LM
11553	CA100CCTBK5	100W	3000K, 4000K, or 5000K	13750LM

Optional Accessories

Microwave Motion Sensor, Sensor Remote Control are available

Architectural LED Panel Light

Designed for easy installation in retrofit or new construction projects.



4
Models

VOLTAGE

120VAC

WATTAGE

10W, 12W, 18W, 24W

LUMENS

650 up to 2000

COLOR SELECTABLE

2700K, 3000K, 3500K,
4000K, 5000K

SIZES

5", 7", 9", 12"

FEATURES

- + 4 size options
- + Easy installation
- + 5 CCT Color Selection
- + Exceptional color rendering
80+ CRI
- + 100% to 5% dimming range
- + Smooth edgelit LED
technology
- + 50,000 hour rated life
- + IP65 exterior, wet location
rated

Size	Watts	Lumens	CCT
5"	10W	650 LM	2700K, 3000K, 3500K, 4000K, or 5000K
7"	12W	1100 LM	2700K, 3000K, 3500K, 4000K, or 5000K
9"	18W	1550 LM	2700K, 3000K, 3500K, 4000K, or 5000K
12"	24W	2000 LM	2700K, 3000K, 3500K, 4000K, or 5000K

Trim Ring Options: Black or Satin Nickel

Optional Accessories

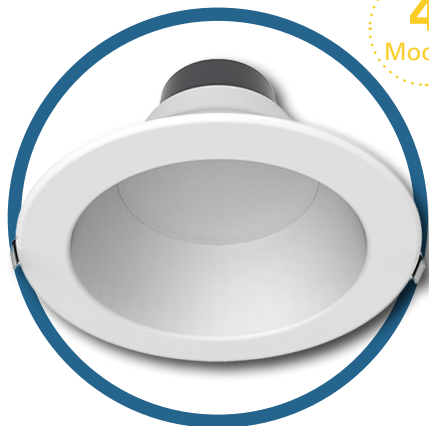
Emergency Back-up Driver, Microwave
Sensor, Sensor Remote Control and
Advanced Controls are available

Commercial Downlight

Commercial Downlights are perfect for wet locations such as soffit and covered walkway installations, out of direct weather.

4

Models



VOLTAGE

120/277V

WATTAGE SELECTABLE

5W up to 32W

LUMENS

500 up to 3000

COLOR SELECTABLE

3000K, 3500K, 4000K

FEATURES

- + 3-Stage brightness adjustable
- + 3 CCT color selectable
- + 90+ CRI Enhanced Color Clarity
- + 0-10V dimming
- + Dimming range of 10% to 100%
- + Architectural recessed lighting, easy installation
- + Durable aluminum housing with spring-loaded retention clips
- + Driver Housing: Cast Aluminum
- + Fixture Body: Spun Aluminum
- + New construction or in retrofit/renovation applications

COMPATIBLE

with EarthConnect®
Network Lighting Controls



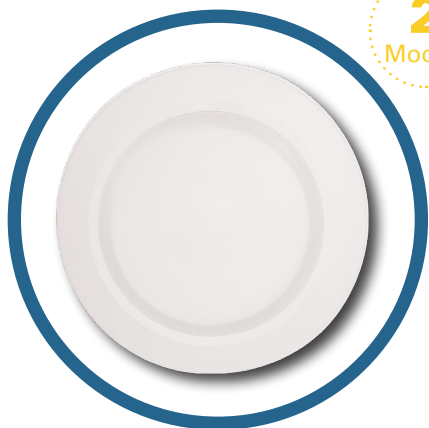
Order Code	Model #	Size	Watts Selectable	CCT Selectable	Lumens
11725	DL4WSCCTWH1	4"	5W, 7W, or 12W	3000K, 3500K, or 4000K	500LM 700LM 1000LM
11418	DL6WSCCTWH1	6"	7W, 10W, or 18W	3000K, 3500K, or 4000K	700LM 1000LM 1500LM
11419	DL8WSCCTWH1	8"	10W, 15W, or 22W	3000K, 3500K, or 4000K	1000LM 1500LM 2000LM
11420	DL9WSCCTWH1	9.5"	20W, 25W, or 32W	3000K, 3500K, or 4000K	2000LM 2500LM 3000LM

Optional Accessories

Goof Ring, T-Grid Plate, Joist Plate, Emergency Back-up Driver, and Advanced Controls are available

LED Disk Light

Disk Lights are ideal for tight spaces, such as, hallways, corridors, and closets.



2
Models

VOLTAGE

120V

WATTAGE

12W and 10W

LUMENS

840, 1000

COLOR SELECTABLE

2700K, 3000K, 3500K,
4000K, 5000K

FEATURES

- + 5 CCT color selectable
- + Easily install over J-box or 4" and 6" downlight cans
- + Flexibility to install either with the E26 screw base connector (included) or hardwire directly to junction box
- + UL 1598 listed for dry and damp locations
- + Smooth dimming, dimmable down to 10%
- + Architectural recessed lighting
- + 50,000 hrs rated life

Order Code	Model #	Length	Watts	CCT Selectable	Lumens
11598	DK12CCT4WH2	4"	12W	2700K, 3000K, 3500K, 4000K, or 5000K	840LM
11877	DK10CCTWH2	6"	10W	2700K, 3000K, 3500K, 4000K, or 5000K	1000LM

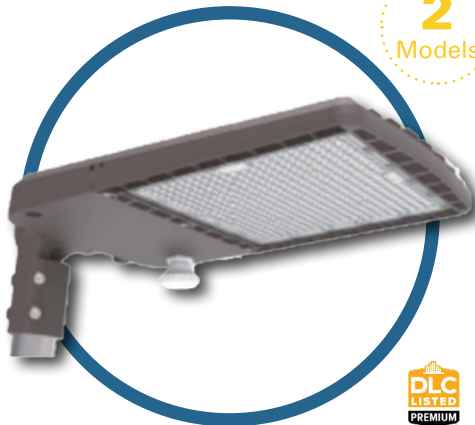
Optional Accessories

Goof Ring and T-Grid Plate are available

LED Area Light

The Area Light is ideal for exterior illumination for commercial, industrial, and municipal facilities.

2
Models



VOLTAGE

120-347V

WATTAGE SELECTABLE

70W up to 300W

LUMENS

9100 up to 39000

COLOR SELECTABLE

3000K, 4000K, 5000K

FEATURES

- + 3 Stage brightness adjustment
- + 3 CCT color selectable
- + 0-10V dimming provides for smooth control of light levels
- + Dimming range of 10% to 100%
- + Corrosion resistant finish and screws
- + IP65 wet location
- + Durable die-cast aluminum
- + 6kV surge protector included
- + Changeable mount system
- + Type III Lens

COMPATIBLE
with EarthConnect®
Network Lighting Controls



Order Code	Model #	Watts	CCT Selectable	Lumens
11765	AL150WSCCTBK5	70W, 100W, or 150W	3000K, 4000K, or 5000K	9100LM 13000LM 19500LM
11766	AL300WSCCTBK5	200W, 240W, or 300W	3000K, 4000K, or 5000K	26000LM 31200LM 39000LM

Optional Accessories

Slip Fitter, Universal Mount, Trunion Mount, Yoke Mount, Lens available for Type II, IV, & V, Microwave Sensor, Sensor Remote Control, Advanced Controls, and 10kV Surge Protector are available

LED Floodlight

The LED Floodlight is perfect for outdoor lighting applications.

3
Models



VOLTAGE
120V/277V, 347V

WATTAGE SELECTABLE
30W, 50W, 70W

LUMENS
3420 up to 9500

COLOR SELECTABLE
3000K, 4000K, 5000K

FEATURES

- + 3 CCT color selectable
- + Textured architectural bronze powder coat finish with high impact acrylic lens
- + Dimming range of 10% to 100%
- + Architectural recessed lighting easy installation
- + Reduces sky glow at 3000K
- + Ships standard with Knuckle Joint
- + Yoke Mount available
- + IP65 exterior, wet location rated

Order Code	Model #	Watts	CCT Selectable	Lumens
11333 120/277V	FL30CCTBK1	30W	3000K, 4000K, or 5000K	3420LM
11334 120/277V	FL50CCTBK1	50W	3000K, 4000K, or 5000K	5770LM
11335 120/347V	FL70CCTBK5	49W, 56W, 63W, or 70W <small>*Wattage Selectable</small>	3000K, 4000K, or 5000K	6650LM 7600LM 8550LM 9500LM

Optional Accessories

Knuckle and Yoke Mounts are available

LED Adjustable Wall Pack

The Adjustable Wall Pack is a great choice for outdoor applications and can withstand extreme weather climates.

2
Models



VOLTAGE

120/347V

WATTAGE SELECTABLE

30W up to 120W

LUMENS

3900 up to 15600

COLOR SELECTABLE

3000K, 4000K, 5000K



FEATURES

- + 3-Stage brightness adjustable
- + 3 CCT color selectable
- + Adjustable 0°-90°
- + Durable die-cast aluminum
- + 0-10v continuous dimming driver
- + Dimming range 0% to 100%
- + Photocell built-in
- + IP65 exterior, wet location rated

Order Code	Model #	Watts Selectable	CCT Selectable	Lumens
11627	WPA50WSCCTBK5	30W, 40W, or 50W	3000K, 4000K, or 5000K	3900LM 5200LM 6500LM
11628	WPA120WSCCTBK5	72W, 96W, or 120W	3000K, 4000K, or 5000K	9360LM 12480LM 15600LM

Traditional Wall Pack

This fixture replaces any wall pack and provides night sky compliance with a 3 CCT Color Selection.

2
Models



VOLTAGE

120/347V

WATTAGE

20W up to 100W

LUMENS

2700 up to 13500

COLOR SELECTABLE

3000K, 4000K, 5000K

FEATURES

- + 3 CCT color selectable
- + Night sky compliant and reduces sky glow at 3000K
- + Durable die-cast aluminum
- + 0-10v continuous dimming driver
- + Built in Photocell
- + Dimming range 0% to 100%
- + Tempered and impact resistant clear prismatic borosilcate glass lens
- + Operates down to -40°F
- + IP65 wet location rated
- + 6kV Surge protector included

Order Code	Model #	Watts	CCT Selectable	Lumens
11864	WPTWS40CCTBK5	20W, 30W, or 40W	3000K, 4000K, or 5000K	2700LM 4050LM 5400LM
11865	WPTWS100CCTBK5	60W, 80W, or 100W	3000K, 4000K, or 5000K	8100LM 10800LM 13500LM

Mini Wall Pack

Mini Wall Packs provide exterior wide-flood area illumination for commercial, industrial, and municipal facilities.



VOLTAGE

120/277V

WATTAGE SELECTABLE

15W, 20W, 25W

LUMENS

1800, 2400, 3000

COLOR SELECTABLE

3000K, 4000K, 5000K

FEATURES

- + 3-Stage brightness adjustable
- + 3 CCT color selectable
- + Architectural bronze finish, anti-corrosion spray, cast alloy housing
- + Durable UV-stabilized PC lens resist corrosion and environmental conditions
- + Suited for wall mounting to provide a wide flood area
- + Dusk to dawn sensor is installed
- + IP65 exterior, wet location rated
- + Night sky compliant and reduces sky glow at 3000K
- + -40°F to 104°F operating range

Order Code	Model #	Watts Selectable	CCT Selectable	Lumens
11700	LWPMWSCCTBZ1	15W, 20W, or 25W	3000K, 4000K, or 5000K	1800LM 2400LM 3000LM

TLED Linear Tubes

Type B



TYPE B FEATURES

- + Lumens per watt
140 – 150 lpw
- + Easy install double end
- + Emergency backup kit
replaces fluorescent back-up
for emergency egress lighting
- + 96" HO, 96", 48", 36", 24",
U-Bend
- + R17d, 96" HO lamps
In-Stock

Order Code	Model #	Description	Replaces	Watts	Lumens	CCT
11183	LT814840BDETC	TLED Type B DE Coated	T8 – 48"	14W	1800	4000K
11184	LT814850BDETC	TLED Type B DE Coated	T8 – 48"	14W	1800	5000K
10745	LT817840BDE	TLED Type B DE 120/277V	T8 – 48"	17W	2200	4000K
10553	LT815840DET	TLED Type B DE 120/277V	T8 – 48"	15W	2200	4000K
10554	LT815850DET	TLED Type B DE 120/277V	T8 – 48"	15W	2200	5000K
11564	LT81450BDE	TLED Type B DE 120/277V	T8 – 48"	14W	1800	5000K
11487	LT812835BDE	TLED Type B DE 120/277V	T8 - 48"	12W	1700	3500K
11489	LT812850BDE	TLED Type B DE 120/277V	T8 - 48"	12W	1800	5000K
11488	LT812840BDE	TLED Type B DE 120/277V	T8 - 48"	12W	1800	4000K
10929	LT525840BDE	TLED T5 Type B DE	T5 - 45.8"	25W	3500	4000K
10930	LT525850BDET	TLED T5 Type B DE	T5 - 45.8"	25W	3500	5000K
11593	LT832840BDE	TLED Type B 8' DE Fa8	T8 – 96"	32W	4400	4000K
11594	LT832850BDE	TLED Type B 8' DE Fa8	T8 – 96"	32W	4400	5000K
11550	LT840850BDEHO	TLED Type B 8' DE R17d	T8 – 96"	40W	5500	5000K
10628	LT8U18840B	TLED Type B U-Bend	6" U-Bend	18W	2200	4000K

TLED Linear Tubes

Type A

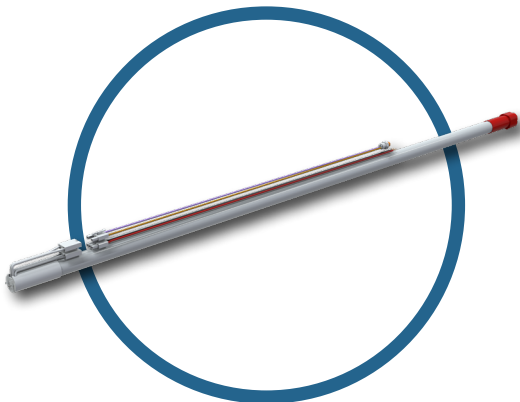


TYPE A FEATURES

- + 96", 48", 36", 24", U-Bend
- + High spec grade for Program Start, Instant Start and Emergency Back-up ballasts
- + Coated lamps available
- + T8 & T5 lamps available

Order Code	Model #	Description	Replaces	Watts	Lumens	CCT
11439	LT814835G9	TLED Type A 14W 2100LM 3500K	T8 – 48"	14W	2100	3500K
11440	LT814840G9	TLED Type A 14W 2200LM 4000K	T8 – 48"	14W	2200	4000K
11441	LT814850G9	TLED Type A 14W 2200LM 5000K	T8 – 48"	14W	2200	5000K
10627	LT8U15850	TLED Type A UBend 15W 2200LM 5000K	Ubend	15W	2200	5000K
10850	LT525840G3	TLED Type A T5 25W 3500LM 4000K	T5 – 45.8"	25W	3500	4000K
10851	LT525850G3	TLED Type A T5 25W 3500LM 5000K	T5 – 45.8"	25W	3500	5000K

TLED Linear Tubes - Specialty



FEATURES

Type B Emergency Back-up

- + 3 CCT Selectable with Switch
- + 90 min back-up light
- + Suitable for dry or damp locations
- + Type B direct wire



FEATURES

Type A/B Hybrid

- + 5 CCT Selectable
- + Single or double end installation
- + Type A - Plug & Play solutions for instant start electronic ballast
- + Type B - Direct wire

Order Code	Model #	Description	Watts	Lumens	CCT Selectable
11735	LT812CCTBEM	Type B with Emergency Back-up. Single End Installation.	14.5 W	2000	3500K, 4000K, or 5000K
11879	LT8158CCTABSDE	Type A/B Hybrid - 4ft Single or Double End Installation.	15 W	2100	3000K, 3500K, 4000K, 5000K, or 6500K



CONTACT US TO LEARN MORE



Toll Free: 866.632.7840



www.earthtronics.com



Email: contact@earthtronics.com

For the most up to date specifications,
please visit earthtronics.com.
Specifications are subject to change.